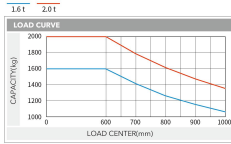
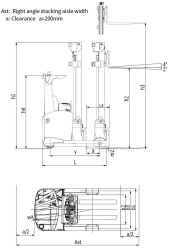


G2 1.6-2.0 t

WIDE VIEW FULL FREE 3-STAGE MAST										
Mast model	Max. lifting height (mm)	Load capacity (load center 600mm)(kg)	Load capacity (load center 800mm)(kg)	Load capacity (load center 1000mm)(kg)	Mast overall height (mm)	Free lifting height (without backrest)(mm)	Service weight(kg)	Service weight(kg)	Service weight(kg)	Fork tilt angle (front/rear)(°)
		CQD16-GBZSL	CQD20-GBZSL	CQD26-GBZSL	1.6-2t	1.6-2t	CQD16-GBZSL	CQD20-GBZSL	CQD26-GBZSL	
ZM460	4600	1600	2000	2314	1420	1440	3395	3650	3910	2"/4"
ZM480	4800	1600	2000	2381	1440	1460	3440	3670	3910	2"/4"
ZM500	5000	1600	2000	2451	1460	1480	3484	3730	3910	2"/4"
ZM520	5200	1600	2000	2521	1480	1500	3528	3775	3910	2"/4"
ZM540	5400	1600	2000	2591	1500	1520	3572	3815	3910	2"/4"
ZM560	5600	1600	2000	2661	1520	1540	3616	3855	3910	2"/4"
ZM580	5800	1600	2000	2731	1540	1560	3660	3895	3910	2"/4"
ZM600	6000	1600	2000	2801	1560	1580	3704	3935	3910	2"/4"
ZM620	6200	1600	2000	2871	1580	1600	3748	3975	3910	2"/4"
ZM640	6400	1600	2000	2941	1600	1620	3792	4015	3910	2"/4"
ZM660	6600	1600	2000	3011	1620	1640	3836	4055	3910	2"/4"
ZM680	6800	1600	2000	3081	1640	1660	3880	4095	3910	2"/4"
ZM700	7000	1600	2000	3151	1660	1680	3924	4135	3910	2"/4"
ZM720	7200	1600	2000	3221	1680	1700	3968	4175	3910	2"/4"
ZM740	7400	1600	2000	3291	1700	1720	4012	4215	3910	2"/4"
ZM760	7600	1600	2000	3361	1720	1740	4056	4255	3910	2"/4"
ZM780	7800	1600	2000	3431	1740	1760	4100	4295	3910	2"/4"
ZM800	8000	1600	2000	3501	1760	1780	4144	4335	3910	2"/4"
ZM820	8200	1600	2000	3571	1780	1800	4188	4375	3910	2"/4"
ZM840	8400	1600	2000	3641	1800	1820	4232	4415	3910	2"/4"
ZM860	8600	1600	2000	3711	1820	1840	4276	4455	3910	2"/4"
ZM880	8800	1600	2000	3781	1840	1860	4320	4495	3910	2"/4"
ZM900	9000	1600	2000	3851	1860	1880	4364	4535	3910	2"/4"
ZM920	9200	1600	2000	3921	1880	1900	4408	4575	3910	2"/4"
ZM940	9400	1600	2000	3991	1900	1920	4452	4615	3910	2"/4"
ZM960	9600	1600	2000	4061	1920	1940	4496	4655	3910	2"/4"
ZM980	9800	1600	2000	4131	1940	1960	4540	4695	3910	2"/4"
ZM1000	10000	1600	2000	4201	1960	1980	4584	4735	3910	2"/4"

Note: The free lift height is 4600mm (930mm) when the truck is not assembled with backrest. The free lift height is 175mm increased and other height is 25mm increased.

WIDE VIEW MAIST									
Mast model	Max. lifting height (mm)	Load capacity/load center 600mm(kg)	Load capacity/load center 800mm(kg)	Load capacity/load center 1000mm(kg)	Hot water height (mm)	Service weight(kg)	Service weight(kg)	Service weight(kg)	Fork tilt angle (front/rear)(°)
		CQD16-GBZSL	CQD20-GBZSL	CQD26-GBZSL	1.6-2t	CQD16-GBZSL	CQD20-GBZSL	CQD26-GBZSL	
M120	2000	1600	2000	2200	2025	3425	3425	3425	2"/4"
M130	3000	1600	2000	2350	2050	3450	3450	3450	2"/4"
M150	3600	1600	2000	2550	2100	3470	3470	3470	2"/4"
M180	3800	1600	2000	2650	2150	3495	3495	3495	2"/4"
M200	4000	1600	2000	2750	2200	3515	3515	3515	2"/4"
M220	4200	1600	2000	2850	2250	3535	3535	3535	2"/4"
M240	4400	1600	2000	2950	2300	3555	3555	3555	2"/4"
M260	4600	1600	2000	3050	2350	3575	3575	3575	2"/4"
M280	4800	1600	2000	3150	2400	3595	3595	3595	2"/4"
M300	5000	1600	2000	3250	2450	3615	3615	3615	2"/4"



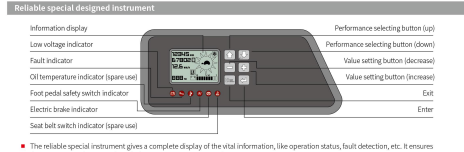
Note: The vertical axis stands for load capacity and the horizontal axis stands for load center which is calculated from the front surface of the forks to the gravity of the standard load. The standard load means a cubic with 1000mm edge length. When masts is tilted forward, using non-standard forks or loading large goods, the load capacity will be reduced. The load capacity of standard mast at different load center can be known from this load chart.



制造商和技术参数			
Character			
1.01 Manufacturer		HELI	
1.02 Model		CQD16	CQD20
1.03 Configuration number		GBZSL	GBZSL
1.04 Load capacity	Q	1600	2000
1.05 Load center distance	C	600	600
1.06 Power mode		Lithium Battery	Lithium Battery
1.07 Driving mode		Series	Series
1.08 Wheel base	Y	1480	1515
Type			
2.01 Type type		Polyurethane	Polyurethane
2.02 Number of wheels, driving wheel (bearing wheel + driving wheel)		1x2	1x2
2.03 Truck width (bearing wheels)	N3	1157	1143
2.04 Size of bearing wheel		φ305x120	φ330x120
2.05 Size of driving wheel		φ345x124	φ381x124
Lift			
3.01 Lifting height of standard mast	N3	4600	4400
3.02 Free lift	N2	1280	1280
3.03 Mast height, lowered	N1	2314	2314
3.04 Fork depth (width × length)	SWL	40x22x1190	40x22x1190
3.05 Fork adjusting width		345-754	345-754
3.06 Fork tilt angle (front/rear)		2"/4"	2"/4"
Performance			
4.01 Fork speed (lifting)		1.75	1.75
3.08 Truck body length (fork excluded)	L	1840	1842
3.09 Truck body width	W	1070	1070
3.10 Distance between support arms	D	900	900
3.11 Reach distance	R	605	635
3.12 Height of overhead guard (cab)	H	2215	2215
3.13 Ground clearance, below mast	m2	75	75
3.14 Turning radius	W	1689	1751
3.15 Load distance, centre of support arm wheel to face of forks	A	369	391
3.16 Ash width with pallet 1200 × 1200 across forks	AA	2914	2857
3.17 Ash width with pallet 1000 × 1200 across forks	AA	2768	2884
Performance			
4.01 Travelling speed, with/without load		14/14	14/14
4.02 Lifting speed, with/without load		0.4/0.5	0.4/0.5
4.03 Lowering speed, with/without load		0.5/0.5	0.5/0.5
4.04 Reach speed, with/without load		0.1/0.1 L	0.1/0.1 L
4.05 Maximum climbing ability, with/without load		10/15	10/15
Weight			
5.01 Total weight (with battery)	kg	3480	3650
5.02 Ash load fork outreached, without load, front/rear	kg	1970/1880	1890/1950
5.03 Ash load fork retracted, without load, front/rear	kg	2180/1275	2180/1275
5.04 Ash load fork outreached, with load, front/rear	kg	410/440	580/545
5.05 Ash load fork retracted, with load, front/rear	kg	1000/1140	1940/1900
Battery			
6.01 Battery voltage/capacity	V/Wh	Standard 80V/302, Optional 80V/238, 80V/200	Standard 80V/302, Optional 80V/238, 80V/200
6.02 Battery weight	kg	630	630
6.03 Battery box dimension	mm	1220x730x750	1220x730x750
Motor and controller			
7.01 Drive motor power (52-60mm)		7	8
7.02 Lifting motor power (52-150)		12.5	15.5
7.03 Steering motor power (35-50W)		5.4	5.4
7.04 Transmission box		HELI special transmission box	
7.05 Torque brake		Electromagnetic brake	
7.06 Hydraulic system working pressure		17.5	20.5

NOTE: *Detailed information about battery, please contact our salesman or engineer.

www.heliforklift.net



The reliable special instrument gives a complete display of the vital information, like operation status, fault detection, etc. It ensures the operator get the most information more intuitive and convenient.



Standard configuration	Optional device
AC travelling motor	Three-stage full free lift mast
AC lifting motor	Fork with other length
AC steering motor	Fork extension
ZAPF travelling motor controller	Lifting height pre-selector
ZAPF lifting motor controller	Monitoring system
ZAPF steering motor controller	Battery charger
Electromagnetic brake	Customer made color
DC/DC converter	Battery side pulling
Low noise gear pump	HELI smart fleet management system
Control valve (four throw)	
Integral sideshifter	
Standard fork	
Backrest	
Polyurethane tyre	
LED meter	
Front working light	
Warning light	
Safety belt	
Rearview mirror with wide view angle	
Blue warning light	

- Charger technology**
- High Efficiency: Charging efficiency higher than 95% meeting the requirement of energy saving and emissions reduction.
 - Speediness: 100% charging realized in 2 hours at the soonest.
 - Compatibility: 40V/50V compatibility meeting the demand of different voltage levels.
 - Safety: Built-in mis-connecting protection offering self-locking function under fault. Perfect fault self-checking alarm facilitating users' maintenance.

1.6-2.0 t G2 SERIES LITHIUM BATTERY POWERED REACH TRUCK (SIT-DOWN TYPE)(80V)



ANHUI HELI CO., LTD.
 Add: 7 No.666, Fengting Road, Hefei, China
 Fax: +86-551-4863906
 Tel: +86-551-4263928(America); 6303928(Europe); 6303928(Australia); 6562135(Africa & Middle East)

QR codes for social media: LinkedIn, YouTube, Facebook.

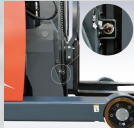
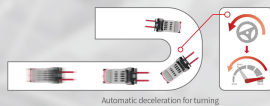
*The products are subject to improvement and change without notice.

G2 1.6-2.0t LITON



Intelligent security protection

- Intelligent stabilization system: It can automatically adjust the mast and the truck speed according to the lifting height and load state, improve the high bearing capacity and vehicle stacking safety.
- Intelligent speed limit in different application: multi-scenario identification and intelligent speed limit balance efficiency and safety.
- Intelligent limit buffering: Intelligent induction of mast lifting and lowering avoids extreme impact and is safe and comfortable.
- Intelligent operation protection: a full set of OPS system can avoid misoperation and ensure safety.
- Intelligent control strategy: dual core controller is in line with the latest EU safety requirements.
- Intelligent steering deceleration: The automatic deceleration function of the turning can reduce the risk of turning over.

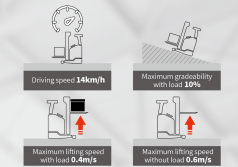


New designed hydraulic system

- New designed hydraulic system with high working efficiency
- High power lifting motor
- MOFET lifting speed governing electric controller
- New type low noisy gear pump

High performance guarantee high efficiency

- Lifting speed is increased by 10% and thus more goods can be lifted under the same conditions
- The truck has fast driving and lifting speed, higher working efficiency
- ZAP dual CPU controller conforming to the latest EU standard is equipped.
- The newly designed high-performance 80V voltage level motor has strong power.
- The latest ZAP instrument can be equipped with height preset function. One key for much the set height improves operation efficiency
- Small turning radius makes steering flexible and easy



Advanced EPS electric powered steering

- EPS electric powered steering offering easy, flexible, high efficient and multi-operation
- Steering motor controller
- Automatic centering function
- Real-time shifting between 180° steering mode and 360° steering mode
- Automatic limit on speed and accelerated speed when steering

Easy operated thumb switch

- To control hydraulic functions
- Clear operating units
- Proportional joystick offering a stable and comfort lowering action

Environment Friendly

- Zero emission
- Low noise
- Free of heavy metals
- No corrosion
- No acid mist volatilization

Maintenance Free

- Unnecessary of fluid adding and dust proofing
- Daily maintenance free
- Manual maintenance free

Long Service Life

- Over 75% capacity reserved after 4000 shifts operation
- Longer service life than lead-acid battery in equal working condition
- 5 years or ten thousand hours quality guarantee for high-performance lithium battery



High Efficiency and Energy Saving

- 1-2 hours charging meet 6-8 hours working demand
- High energy density, self-discharging rate lower than 1% per month
- 50% energy conversion rate, superior charging and discharging performance
- Flexible to charge, easy to operate, no impact on battery life
- Unnecessary to charge battery, cost saving

High Safety

- According to the characteristics of industrial vehicles, it achieves safety protection design which includes lithium battery materials, battery case type, pack technique and system power management
- "Multiple mode safety closed-circuit protection" realizing truck real time closed circuit protection in variable conditions
- "Lock affirming" function during charging/avoiding "hot connecting and disconnecting" operation effectively
- "Whole system emergency button" to disconnect the truck control system and stop power quickly ensuring truck safety

Suitable for working in both high and low environment

- Lithium battery low temperature automatic heating, low temperature adaptation performance is superior
- Lithium battery is better than lead-acid battery when working between -25°C and 55°C

Operating Cost Comparison: Lithium battery forklift VS. Lead-acid battery forklift

Lithium battery forklift VS. Lead-acid battery forklift
The advantages of HELI lithium battery forklift trucks are more prominent in the system cost.
Lithium battery forklift truck has the advantages of no noise, no pollution, small vibration and simple operation.
Compared with the lead-acid battery forklift truck, lithium battery forklift has the characteristics of fast charging and charging at any time, which is more suitable for multi-shift operation.
Besides, HELI lithium battery forklift's maintenance-free, high power conversion efficiency, and economical overall operation cost.

